



Alternate Energy Systems, Inc.

A Corporation devoted to Energy-Oriented Needs

WB/HVS LPG-Vaporizer / Air Mixing Systems

Water Bath Vaporizer with Venturi - Type Mixing System

- Capacities from 14 MM BTU/h to over 200 MM BTU/h
- Complete with Vaporizer, Vapor/Air Mixer, Steel Skid, Controls and Surge Tank
- For Standby Systems or Peak Shaving Applications
- Standard Controls for smaller systems
- PLC Controls with Touch Screen Operator Interface for larger systems
- Conforms to ASME, NFPA
- FM / IRI / CSA approved
- Small Footprint
- High Efficiency



WB-550/HVS-50 MM with optional weather shelter and optional inverted system layout (surge tank on left side of vaporizer).

Options

- Remote Monitoring and Control
- Enlarged Control Room (Maintenance House)

Model Numbers and Capacities					
WB- 200 / HVS- 14 MM	14 MMBTU/h	WB-1200 / HVS-100 MM	100 MMBTU/h		
WB- 250 / HVS- 20 MM	20 MMBTU/h	WB-1500 / HVS-110 MM	110 MMBTU/h		
WB- 350 / HVS- 30 MM	30 MMBTU/h	WB-1500 / HVS-120 MM	120 MMBTU/h		
WB- 450 / HVS- 40 MM	40 MMBTU/h	WB-1500 / HVS-130 MM	130 MMBTU/h		
WB- 550 / HVS- 50 MM	50 MMBTU/h	WB-1800 / HVS-140 MM	140 MMBTU/h		
WB- 750 / HVS- 60 MM	60 MMBTU/h	WB-1800 / HVS-150 MM	150 MMBTU/h		
WB- 850 / HVS- 70 MM	70 MMBTU/h	WB-2500 / HVS-200 MM	200 MMBTU/h		
WB-1000 / HVS- 80 MM	80 MMBTU/h	WB-3000 / HVS-250 MM	250 MMBTU/h		
WB-1000 / HVS- 90 MM	90 MMBTU/h				

For higher capacities, call factory !

What are Vaporizer/Mixer Systems ?

LPG vapor is not directly compatible with natural gas and must be mixed with air before it can be used in equipment and appliances that are set up for natural gas. LPG vaporizer/mixer systems consist of a vaporizer to convert liquid LPG into LPG vapor and a vapor/air mixer to mix the vapor with air at a pre-set ratio. They produce a gas mixture that is directly compatible with natural gas. This allows users to switch back and forth between natural gas supplied by their utility company and their own, LPG based backup or peak shaving system, without having to change the setup of their burners, boilers, etc.

The vaporizer/mixer systems described in this brochure are designed for long-time, continuous use. They are the combination of a horizontal water bath vaporizer (see brochure "Water Bath LPG Vaporizers") and a Hallberg Venturi Mixer (see brochure "LPG Vapor/Air Mixing Systems - Venturi Type), generating gas pressures of up to 8 (12) psi without the need of compressed air supply. The absence of a compressor makes these systems very economical to operate. For even larger capacities and/or high pressure applications, vaporizer/mixer systems based on Water Bath Vaporizers and our patented Piston Operated Mixing Systems, POM-30 to POM-60, are available. For smaller systems please refer to the brochure "Direct Fired Vaporizers with Venturi-Type Mixing System.

How do Alternate Energy Systems' Vaporizer/Mixer Systems with Water Bath Vaporizer work ?

Vaporizer/Mixer Systems are designed for easy installation and long, trouble-free service. They come complete with vaporizer, venturi arrangements, surge tank, electric/electronic controls, and all other equipment necessary for safe operation. They are factory tested and ready to be placed on a concrete slab or other, non-combustible ground cover. After connection to liquid LPG, mixed gas line and electrical supply, they can be ready to produce "Synthetic Natural Gas" within a few hours after arrival of the system at the job site.

Liquid LPG from a storage tank is transferred to the vaporizer. Typically, a liquid LPG transfer pump is installed in the liquid supply line, keeping liquid pressure at approximately 100 psi. After vaporization of the LPG in the vaporizer, vapor enters the inlet header of the mixing system and then passes through a pressure regulator. From there, the pressure-adjusted vapor flows through the high precision nozzle and the venturi tube section of the HVS into the surge tank. While the vapor passes through the tube section, the venturi effect "siphons" ambient air through the air-intake/check-valve combination and sends it into the surge tank together with the LPG vapor.

The systems monitor the gas pressure in the surge tank. Increased demand on the system results in a momentary drop in tank pressure. If the tank pressure drops below adjustable setpoints, one or more additional venturi assemblies are activated.

Systems with low-profile vaporizers and two venturi assemblies use electro-mechanical control components (pressure switches). Systems with three or more venturi assemblies have a full-size vaporizer control room and use electronic pressure transmitters and a programmable

logic controller (PLC) to monitor and control all system functions. The PLC also communicates with a display unit, indicating system pressures, Venturi ON/OFF status and any trouble conditions that may occur.

In addition to the standard control system configurations, specific customer requirements, such as integration with existing plant monitoring systems or remote monitoring and control, can easily be accommodated.

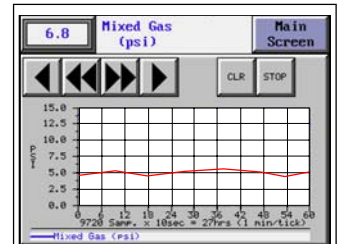
For smaller systems with only two venturis, electronic controls are available as an option.

All systems with PLC controls and color LCD display with touch screen operator interface offer a number of convenient system status information screens. Among them are trend graphics for all system pressures, and the alarm history screens.

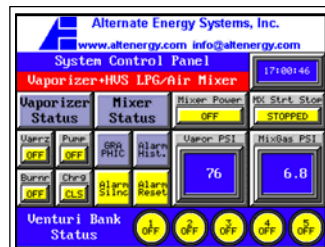
The trend graphics locally store up to 27 hours of pressure data in 10-second intervals. This data can be recalled any time.

The alarm history screens are most useful for trouble shooting. If any of the monitored system functions indicate a problem, time and date are recorded, allowing operators or service personnel to quickly locate the root cause of, and eliminating the problem.

For more detailed information and specifications about water bath vaporizers and HVS mixing systems, please refer to the following brochures: "Water Bath LPG Vaporizers" and "LPG-Vapor / Air Mixing Systems, Venturi - Type".



Up to 9720 samples for 27 hours of data are stored locally in the display and can be recalled using the soft keys on the trend chart. After the 9720th sample, the "oldest" reading is pushed from memory (first-in-first-out) and the latest reading is stored.



Main Screen of a typical color LCD display with touch screen operator interface. The intuitive screen layout with colored buttons and status indicators minimizes operator training and shows the system status at a glance.

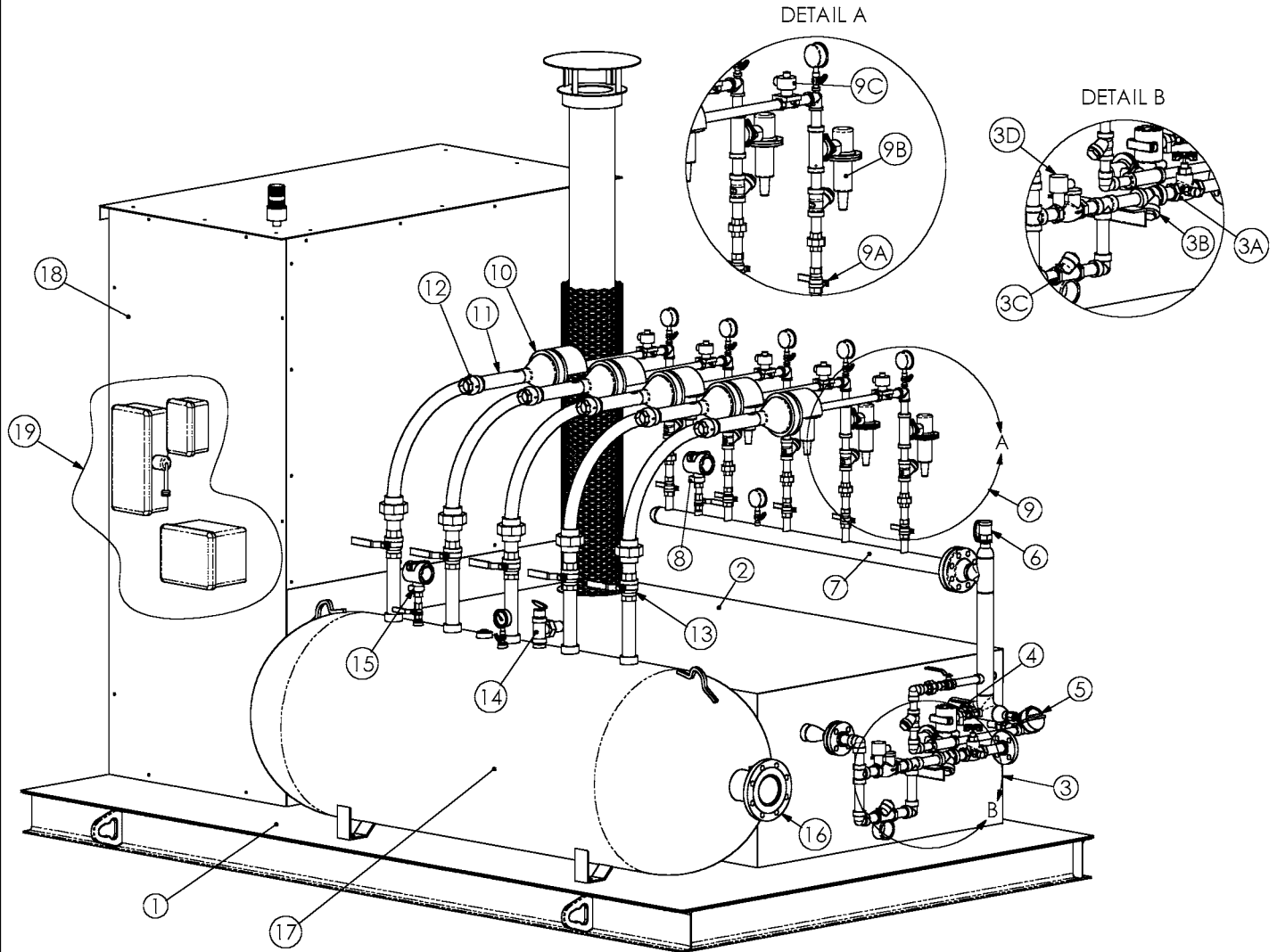
ALARM HISTORY		TOTAL OF 04 ALARMS
ENTRY	MESSAGE	
01	Vaporizer Liquid Carryover Alarm	
02	Vaporizer Flame Failure	
03	Mixer Low Vapor Pressure	
04	Mixer Low Mixed Gas Pressure	

ALARM HISTORY DETAILS	
ENTRY NO:	01 Mixer: High Vapor Pressure
ACTIVATED:	16:02:51 15-OCT-01
CLEARED:	16:04:33 15-OCT-01
ACTUAL VALUE:	TRIGGER_ON/STATE
HIGH/LOW/DIS:	DISCRETE
LOW LIMIT:	
HIGH LIMIT:	

The screen on the left shows a list of alarms that have occurred since the last reset. Knowing the sequence of events before an involuntary system shutdown will allow operators or service personnel to quickly determine, and remove, the cause for the problem. Having this operating data available will also make it easier to obtain factory support over the phone.

The screen on the right provides detail time and date information when an alarm situation occurred, and when it was reset. This function is particularly helpful for finding intermittently occurring problems.

Main Components of Vaporizer/Mixer Systems with Hallberg Venturi and Water Bath Vaporizer



Legend (WB-550/HVS50)

1 Steel Skid	9 Detail A: Venturi Line
2 Vaporizer	9a Shutoff Valve
3 Detail B: Liquid Inlet Train	9b Vapor Pressure Regulator
3a Inlet Shutoff Valve	9c Solenoid Valve
3b Strainer	10 Air Inlet with Check Valve
3c Check Valve	11 Venturi Nozzle
3d Solenoid Valve	12 Check Valve
4 "Smart" Liquid Carryover Pressure Transmitter	13 Shutoff Valve
5 "Smart" Liquid Carryover Temperature Transmitter	14 Surge Tank Relief Valve
6 Vapor Header Relief Valve	15 Mixed Gas Pressure Transmitter
7 Vapor Header	16 Mixed Gas Outlet Flange
8 Vapor Pressure Transmitter	17 Surge Tank
	18 Full Size System Control Room
	19 Disconnect, Load Center, Transformer, Communications Box



Typical Indicator Unit with Touch Screen Operator Interface. Allen-Bradley PLC ML1200 with DH485 Interface Module.

Features and Specifications

General Specifications

Model Number	Nominal Capacity ¹ 5 to 8 psi (9 to 12 psi version) in MMBTU/h	Number of Venturis ² 5 to 8 psi (9 to 12 psi version)	Surge Tank Capacity US-gal (liter)	Liquid Inlet Connection	Mixed Gas Surge Tank Connection	Approximate Skid Size in Inches (mm) W x L x H	Approximate Shipping Weight lbs (kg) with full-size control room
WB - 200 / HVS - 14 MM	14 (14)	2 (2)	120 (450)	1" - 300# Raised Face Flange	2" - 150# Raised Face Flange	W = 84 (2134) L = 135 (3429) H = 100 (2540)	4650 (2134)
WB - 250 / HVS - 20 MM	20 (21)	2 (2)	120 (450)				4650 (2134)
WB - 350 / HVS - 30 MM	30 (28)	3 (3)	250 (950)				4700 (2134)
WB - 450 / HVS - 40 MM	40 (42)	4 (4)	250 (950)				5650 (2565)
WB - 550 / HVS - 50 MM	50 (49)	5 (4)	250 (950)			5700 (2588)	
WB - 750 / HVS - 60 MM	60 (63)	6 (5)	500 (1893)			W = 98 (2489) L = 158 (4013) H = 100 (2540)	6900 (3133)
WB - 850 / HVS - 70 MM	70 (70)	7 (6)	500 (1893)				6950 (3155)
WB - 1000 / HVS - 80 MM	80 (77)	8 (6)	500 (1893)	2" - 300# Raised Face Flange	3" - 150# Raised Face Flange	7000 (3178)	
WB - 1000 / HVS - 90 MM	90 (91)	9 (7)	1000 (3785)			W = 107 (2718) L = 198 (5029) H = 100 (2540)	9200 (4177)
WB - 1200 / HVS - 100 MM	100 (105)	10 (8)	1000 (3785)				9250 (4200)
WB - 1500 / HVS - 110 MM	110 (112)	11 (9)	1000 (3785)				9300 (4222)
WB - 1500 / HVS - 120 MM	120 (119)	12 (9)	2000 (7570)			Component layout and skid sizes for systems with nominal capaci- ties of 120 MMBTU/h or larger are custom-designed to fit the locally available space. Please contact AES to discuss your specific situation and for weights and dimensions.	
WB - 1500 / HVS - 130 MM	130 (133)	13 (10)	2000 (7570)				
WB - 1800 / HVS - 140 MM	140 (140)	14 (11)	2000 (7570)				
WB - 1800 / HVS - 150 MM	150 (154)	15 (12)	2000 (7570)				
WB - 1800 / HVS - 160 MM	160 (161)	16 (12)	2000 (7570)				
WB - 2000 / HVS - 170 MM	170 (168)	17 (13)	2000 (7570)				
WB - 2000 / HVS - 180 MM	180 (182)	18 (14)	2000 (7570)				
WB - 2200 / HVS - 190 MM	190 (189)	19 (14)	2000 (7570)				
WB - 2200 / HVS - 200 MM	200 (203)	20 (15)	2000 (7570)				
WB - 2500 / HVS - 210 MM	210 (210)	21 (16)	3000 (11355)				
WB - 2500 / HVS - 220 MM	220 (224)	22 (17)	3000 (11355)	4"-150# Raised Face Flange			
WB - 3000 / HVS - 230 MM	230 (231)	23 (17)	3000 (11355)				
WB - 3000 / HVS - 240 MM	240 (238)	24 (18)	3000 (11355)				
WB - 3000 / HVS - 250 MM	250 (252)	25 (19)	3000 (11355)				

¹Nominal Capacity for Propane/Butane @ 0°F Liquid Inlet Temperature.

²Actual number of venturi arrangements may vary with desired mixed gas pressure.

Weights and dimensions are approximate. Specifications are subject to change without notice.

Mixed Gas Sendout Pressure (naturally-aspirated Venturi Mixers)

Standard Venturi type mixers use ambient air to mix with LPG vapor. The maximum achievable mixed gas delivery pressure largely depends on shape and dimension of the nozzle/venturi tube configuration, as well as on the type of the LPG feedstock (Propane/Butane mixture) and the LPG vapor pressure.

Keeping the LPG vapor at low to moderate pressures (30 psi to 60 psi), mixed gas pressures of up to 8 psi can be generated safely and reliably. Depending on the type of LPG feedstock and the installation location (lowest ambient temperatures that must be expected), these mixing systems can often be operated without the installation of a liquid LPG transfer pump.

Higher mixed gas pressures of up to 12 psi can be achieved with specially designed nozzle/venturi tube configurations, operating at vapor pressures of approximately 120 psi to 150 psi. Without exception, these systems require the installation of a liquid LPG transfer pump.

Since higher vapor pressures also lead to higher vapor dew point temperatures, the risk for liquid carryover situations increases. To reduce

these risks, the LPG vapor must be delivered (from the vaporizer) at higher temperatures and/or the vapor supply lines to the mixer must be insulated and/or heat-traced.

Mixed gas delivery pressures higher than 12 psi require the injection of compressed air into the vapor stream. All AES HVS venturi mixer systems can be equipped with this high pressure option, which consists of a separate pressure regulator and associated controls for each venturi assembly. Using this option, system pressures of up to 50 psi can be generated.

Approximate Vapor Pressures for various Mixed Gas Pressures

Mixed Gas Pressure	Propane (HD-5)	Propane/Butane (50/50)
5 psi	30 psi	50 psi
7 psi	50 psi	80 psi
9 psi	120 psi	140 psi
12 psi	145 psi	n/a

Features and Specifications

Control System Components and Configuration

S = Standard Equipment O = Optional Equipment N/A = Not Applicable or Not Available	WB-200/HVS-14MM and WB-250/HVS-20MM "Low Profile"	WB-200/HVS-14MM to WB-350/HVS-30MM "Full Size"	WB-450/HVS-40MM to WB-3000/HVS-250MM "Full Size"
Vaporizer Safety Functions and Controls:			
Automatic Ignition	S	S	S
Electronic Flame Safeguard, Honeywell 6900 Series	S	S	N/A
Electronic Flame Safeguard, Honeywell 7800 Series	N/A	N/A	S
Pilot Failure Safety Shut Down	S	S	S
Ignition Failure Safety Shut Down	S	S	S
Low Water Level Cutoff	S	S	S
Low Burner Gas Pressure	N/A	N/A	S
High Burner Gas Pressure	N/A	N/A	S
High Water Bath Temperature Limit	S	S	S
Relief Valve on Vaporization Tubes	S	S	S
Relief Valve on Burner Gas Train	S	S	S
Liquid Carryover Protection with "fixed" temperature setpoint	S	N/A	N/A
"Smart" Liquid Carryover Protection with Rosemount pressure transmitter and temperature transmitter in vapor outlet; programmable parameters	N/A	S	S
Mixer Safety Functions:			
Low Vapor Supply Pressure Limit; mechanical pressure switch (UE or similar); fixed setting; field-adjustable;	S	N/A	N/A
Low Mixed Gas Pressure Limit; mechanical pressure switch (UE or similar); fixed setting; field-adjustable;	S	N/A	N/A
High Mixed Gas Pressure Limit; mechanical pressure switch (UE or similar); fixed setting; field-adjustable;	S	N/A	N/A
Tank Pressure Monitor (Venturi-activation); mechanical pressure switch (UE or similar); fixed setting; field-adjustable;	S	N/A	N/A
Low Vapor Supply Pressure Limit; electronic pressure transmitter (Rosemount 2088 or similar); operator-adjustable setpoint and deadband;	N/A	S	S
High Vapor Supply Pressure Limit; electronic pressure transmitter (Rosemount 2088 or similar); operator-adjustable setpoint and deadband;	N/A	S	S
Low Mixed Gas Pressure Limit; electronic pressure transmitter (Rosemount 2088 or similar); operator-adjustable setpoint and deadband;	N/A	S	S
High Mixed Gas Pressure Limit; electronic pressure transmitter (Rosemount 2088 or similar); operator-adjustable setpoint and deadband;	N/A	S	S
Tank Pressure Monitor (Venturi-activation) through electronic pressure transmitter (Rosemount 2088 or similar); operator-adjustable activation and de-activation points;	N/A	S	S
Safety Solenoid Valve in vapor supply line to Venturi Mixers; in-line with operator solenoid; opens when mixer is started; closes when mixer is stopped, or when a high-pressure alarm occurs;	S	S	S
Vaporizer and Mixer Controls:			
Standard electric system controls; independent Direct-Contact-Interlocks with Single System Control Relay for vaporizer and mixer;	S	N/A	N/A
Integrated, Full-Feature Electronic System Controls for Vaporizer and Mixing System; PLC with 6-inch Color LCD Display with Touch Screen Operator Interface; includes First Outage Monitor, Alarm History, and Trend Recording;	N/A	S	S
System Control Configuration shown are "typical". Customized system control configurations are available. Please contact factory with your specific requirements. For additional design and feature details of the WB-vaporizers, please review the "LPG Water Bath Vaporizers" brochure.			

High Pressure Option: Compressed Air Requirements (for Propane [HD-5] and Specific Gravities between 1.28 and 1.30)

High Pressure Options are available for all our venturi mixer systems. They consist of a separate pressure regulator and associated controls for each venturi assembly. Using this option, system pressures of up to 50 psi can be generated.

The table on the right shows the air requirements for various system sizes. The numbers are based on propane as the LPG feedstock and include a 15% safety margin for specific gravities of 1.28 to 1.30, allowing the mixed gas to be a direct replacement for typical natural gas with a calorific value of 1000 BTU/cuft and a specific gravity of 0.6.

Approximate Compressed Air Requirements		Approximate Compressed Air Requirements	
Model Number	Air Supply	Model Number	Air Supply
WB - 200 / HVS - 14 MM	103 cfm @ 100 psi	WB - 1200 / HVS - 100 MM	738 cfm @ 100 psi
WB - 250 / HVS - 20 MM	148 cfm @ 100 psi	WB - 1500 / HVS - 110 MM	812 cfm @ 100 psi
WB - 350 / HVS - 30 MM	222 cfm @ 100 psi	WB - 1500 / HVS - 120 MM	886 cfm @ 100 psi
WB - 450 / HVS - 40 MM	295 cfm @ 100 psi	WB - 1500 / HVS - 130 MM	960 cfm @ 100 psi
WB - 550 / HVS - 50 MM	369 cfm @ 100 psi	WB - 1800 / HVS - 140 MM	1034 cfm @ 100 psi
WB - 750 / HVS - 60 MM	443 cfm @ 100 psi	WB - 1800 / HVS - 150 MM	1108 cfm @ 100 psi
WB - 850 / HVS - 70 MM	517 cfm @ 100 psi	WB - 2500 / HVS - 200 MM	1477 cfm @ 100 psi
WB - 1000 / HVS - 80 MM	591 cfm @ 100 psi	WB - 3000 / HVS - 250 MM	1846 cfm @ 100 psi
WB - 1000 / HVS - 90 MM	665 cfm @ 100 psi	Actual requirements depend on application and may vary!	

Communication Options

Alternate Energy Systems, Inc. uses Allen-Bradley Programmable Logic Controllers in all our products. This enables us to offer communications interfaces that allow easy access for remote monitoring and control, and seamless integration with existing plant monitoring and control systems.

Available are DH485 interfaces (standard on all AES equipment), Dial-Up Modems, and Ethernet adapters.

After October 2003, the Ethernet adapters are available with built-in web servers, allowing system monitoring from any standard browser, without the need for specialized software.

When ordering Dial-Up Modem or Ethernet adapter, the PLC is upgraded to a MicroLogix-1500 with LRP processor (standard is MicroLogix-1200).

Please call AES if you require non-standard communication solutions.



RAD-KIT-9300
Dial-Up Modem

NET-AIC DH485
Interface Converter

NET-ENI/W
Ethernet Interface

Option Extended Control Room and Option Enlarged Control Room

All mixing systems with Water Bath Vaporizers have a full-size system control room (maintenance house) with light fixture, wall outlet, and door with window insert.

A standard option is the "Extended Control Room (Maintenance House)", where the depth of the standard control room has been extended by 3 ft. This larger space provides room for additional control and recording equipment, and weather protection for operating and maintenance personnel. If even-larger control rooms are desired, the

optional "Enlarged Control Room (Maintenance House)" is available for all AES vaporizer/mixer systems. They are typically as wide as the vaporizer/mixer skid and approximately 8 ft. long, but can be built to meet any specific requirements. They can be equipped with light fixture, AC outlet, heaters, gas alarm, etc.

For pricing and available options, or to discuss your specific requirements, please contact the factory or your nearest AES distributor.



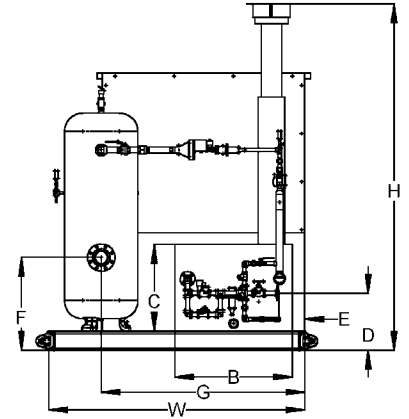
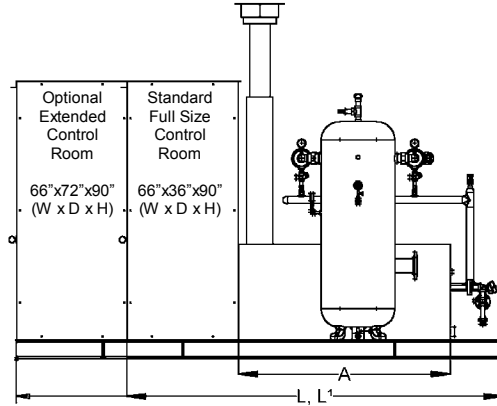
WB-450/HVS-40 with
Enlarged Control Room / Maintenance House

System Dimensions (in inches)

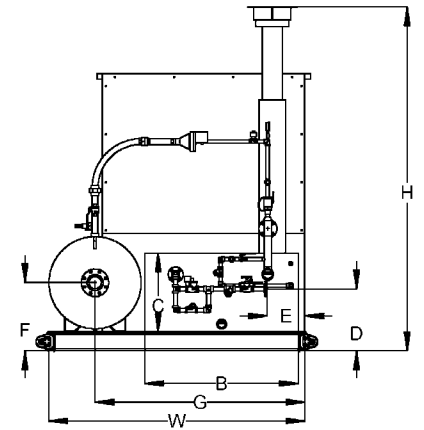
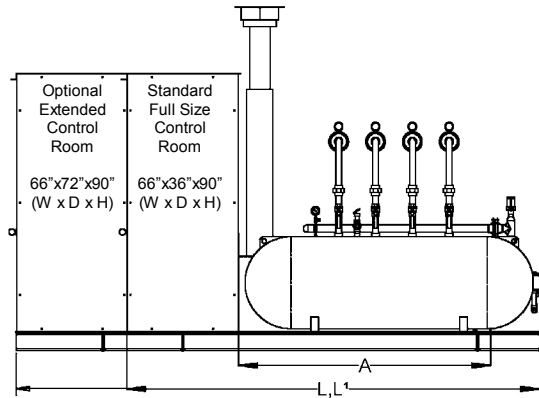
Model Number	Skid Width	Overall Width	Skid Length (Full-Size Control Room)	Skid Length (Extended Control Room)	Overall Height	Water Bath Length	Water Bath Width	Water Bath Height	Liquid Inlet (Height from Grade)	Liquid Inlet (Recess Distance from skid)	Mixed Gas Outlet (Height from Grade)	Mixed Gas Outlet (Recess Distance from skid)
	W	OAW	L	L1	H	A	B	C	D	E	F	G
WB - 200 / HVS - 14 MM	84	84	123	159	112	69	39	31	18-1/2	8-1/2	30-1/4	66-1/2
WB - 250 / HVS - 20 MM	84	84	123	159	112	69	39	31	18-1/2	8-1/2	30-1/4	66-1/2
WB - 350 / HVS - 30 MM	84	84	135	171	112	69	39	31	18-1/2	8-1/2	22-1/4	68-1/2
WB - 450 / HVS - 40 MM	84	84	135	171	112	82	66	25	20-1/2	12-1/4	22-1/4	68-1/2
WB - 550 / HVS - 50 MM	84	84	135	171	112	82	66	25	20-1/2	12-1/4	22-1/4	68-1/2
WB - 750 / HVS - 60 MM	96	100	158	194	112	78	66	38	25-1/2	15-1/4	28-1/4	80-3/4
WB - 850 / HVS - 70 MM	98	100	158	194	112	78	66	38	25-1/2	15-1/4	28-1/4	80-3/4
WB - 1000 / HVS - 80 MM	96	100	158	194	112	107	66	46	32	0	28-1/4	80-3/4
WB - 1000 / HVS - 90 MM	96	100	240	276	112	107	66	46	32	0	28-1/4	80-3/4
WB - 1200 / HVS - 100 MM	96	100	240	276	112	107	66	46	32	0	28-1/4	80-3/4
WB - 1500 / HVS - 110 MM	96	100	240	276	112	107	66	46	32	0	28-1/4	80-3/4

Approximate Dimensions

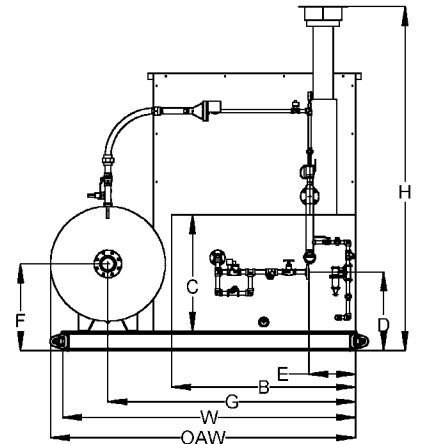
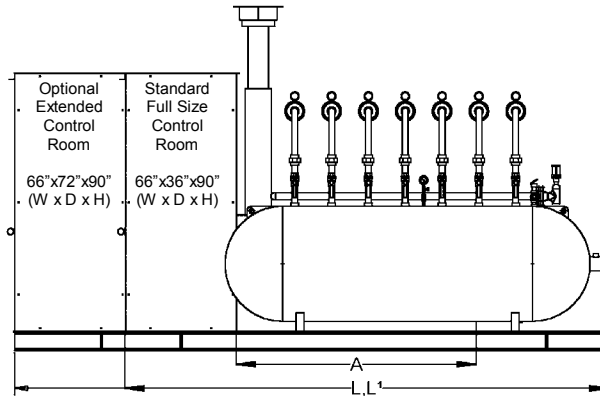
WB - 200 / HVS - 14MM
WB - 250 / HVS - 20MM



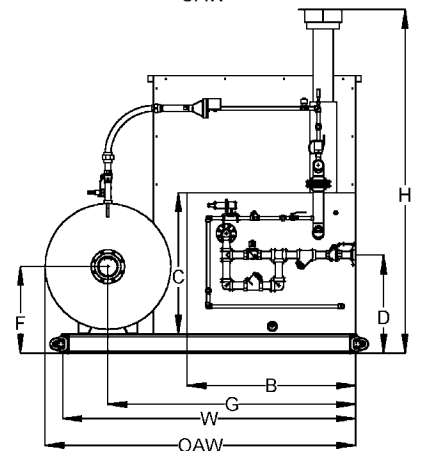
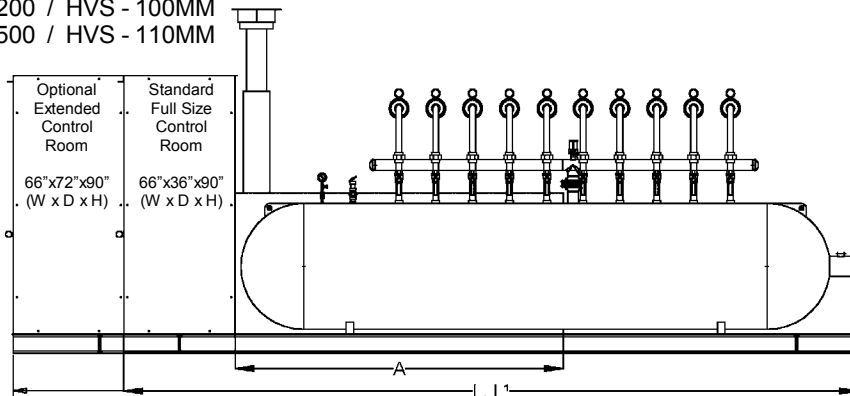
WB - 350 / HVS - 30MM
WB - 450 / HVS - 40MM
WB - 550 / HVS - 50MM



WB - 750 / HVS - 60MM
WB - 850 / HVS - 70MM
WB - 1000 / HVS - 80MM



WB - 1000 / HVS - 90MM
WB - 1200 / HVS - 100MM
WB - 1500 / HVS - 110MM



Who is Alternate Energy Systems, Inc. ?

After working for other manufacturers of LPG vaporizers and LPG / air systems for several years, John E. Hallberg founded Alternate Energy Systems, Inc. in 1974 in Peachtree City, located just 20 minutes south-west of the Atlanta airport. He successfully set out to design and manufacture products which were superior to those of his competitors. As a result, AES became very quickly known as the innovative manufacturer of quality products. Soon, the customer list included a representative cross-section of the Fortune 500 companies in the U.S.



Through the years, AES has constantly added new products, and has further improved the design of existing products, keeping us ahead of the competition. Several designs, including those for LPG/Air mixing systems, were awarded national and international patents.

Today, AES is owned by Wolfgang Driftmeier. With his manufacturing background and his experience in sales and marketing, the company focus is clearly on "... offering the best product design, combined with quality workmanship, at a competitive price, to the full satisfaction of our customers, at all times ...".

AES is committed to serve customers in the U.S. through a network of sales specialists, technical support personnel, distributors and installers, and international customers in selected countries through qualified representatives.

Other Products from Alternate Energy Systems, Inc.

Water Bath Vaporizers
Hot Water Vaporizers
Steam Vaporizers

Electric Vaporizers
Electric Water Bath Vaporizers

Venturi Type LPG / Air Mixers
Patented Piston Operated LPG / Air Mixers

Complete Vaporizer / Mixer Systems
Peak Shaving Plants
Gas Stabilization Systems

Accessories for LPG / Air Systems
LPG Pump Packages

Service
Maintenance
Trouble Shooting

Our Address

Alternate Energy Systems, Inc.
210 Prospect Park P.O. Box 2469
Peachtree City, GA 30269, USA

Phone 770-487-8596
Fax 770-631-4306
Toll Free 800-410-9161

E-Mail info@altenergy.com
WebSite www.altenergy.com

Your AES Distributor